

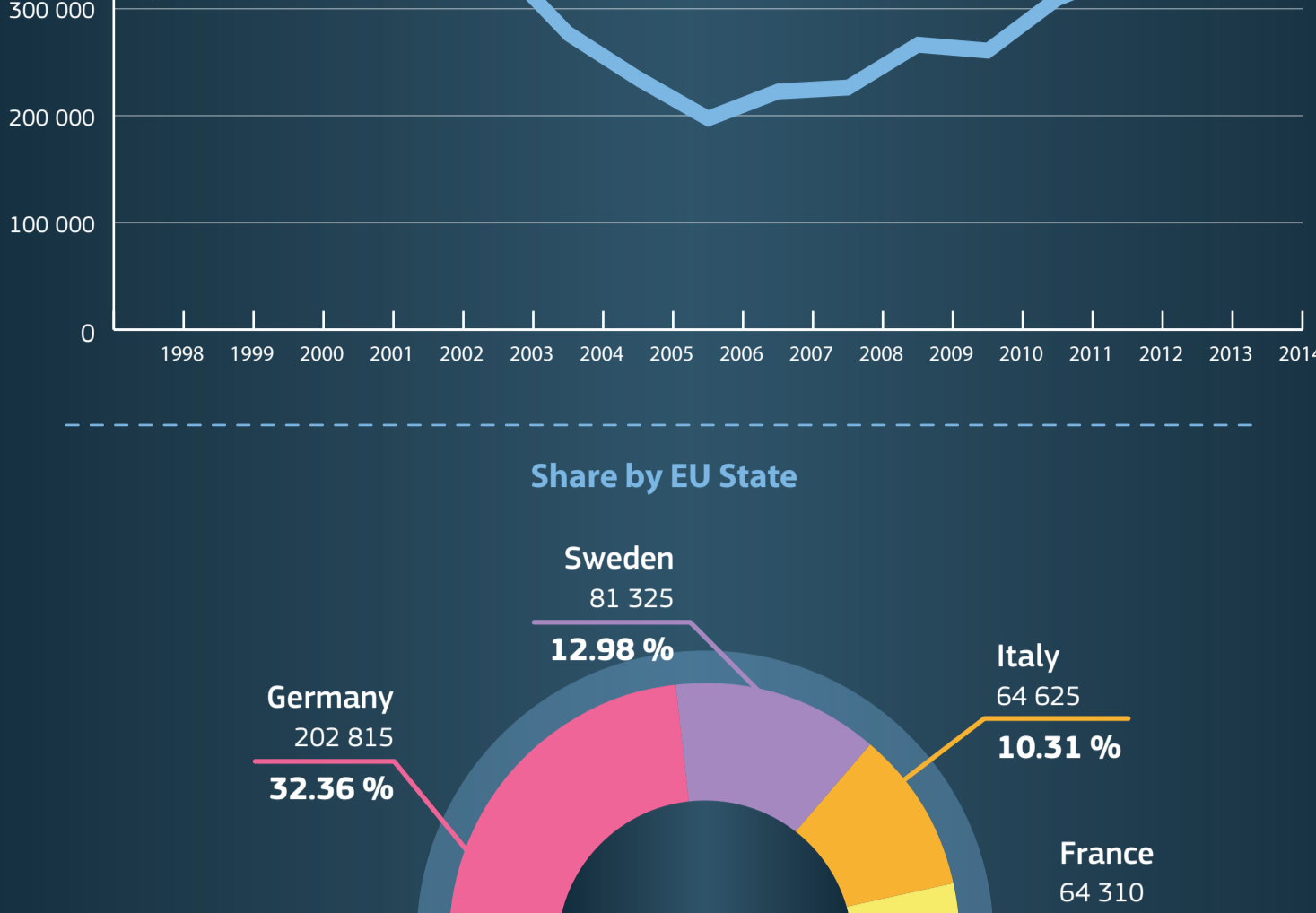
ASYLUM IN THE EU

Source: Eurostat 9/6/2015, unless otherwise indicated

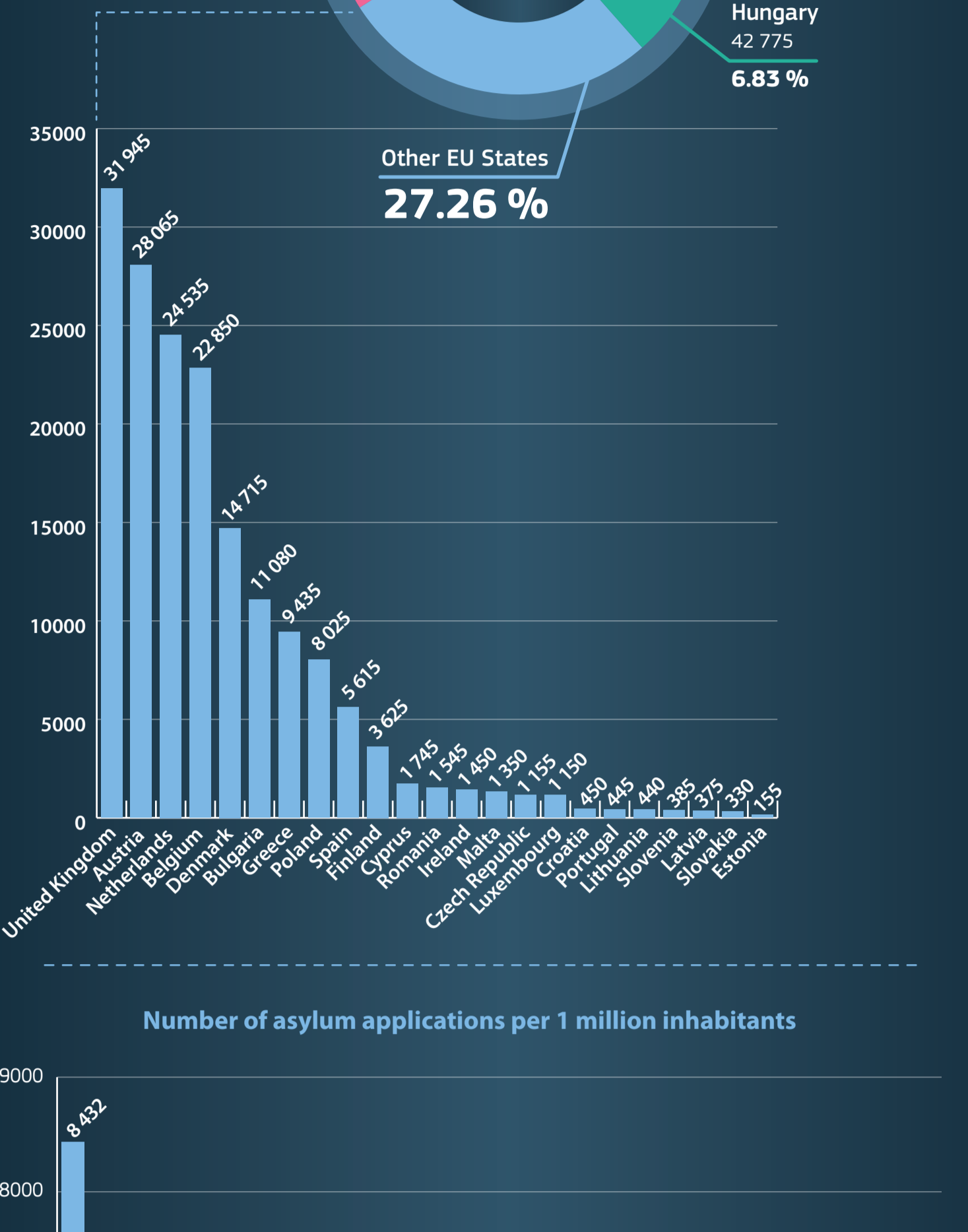
ASYLUM APPLICATIONS IN THE EU28

Total number of asylum applications in 2014

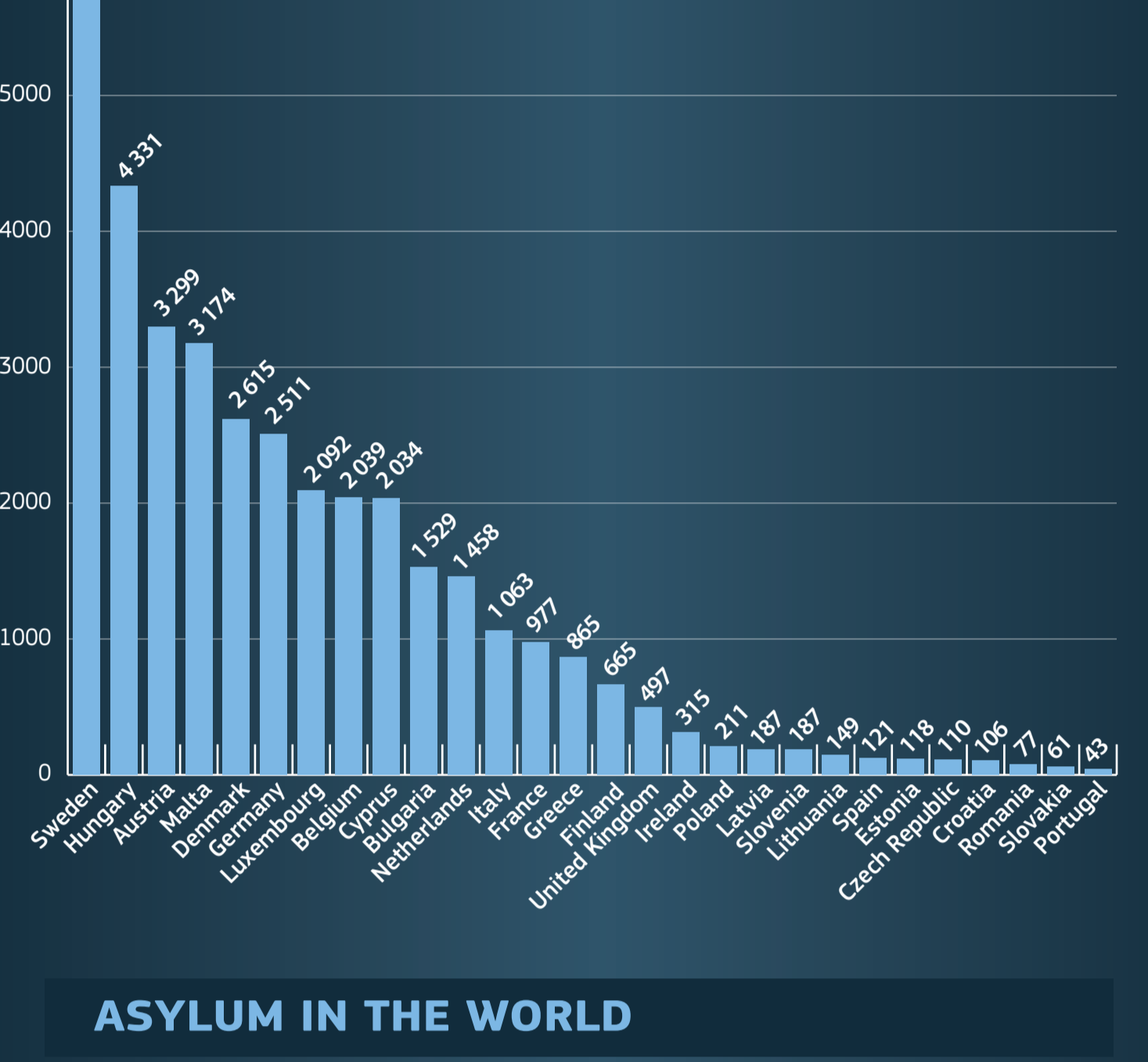
626 715



Share by EU State



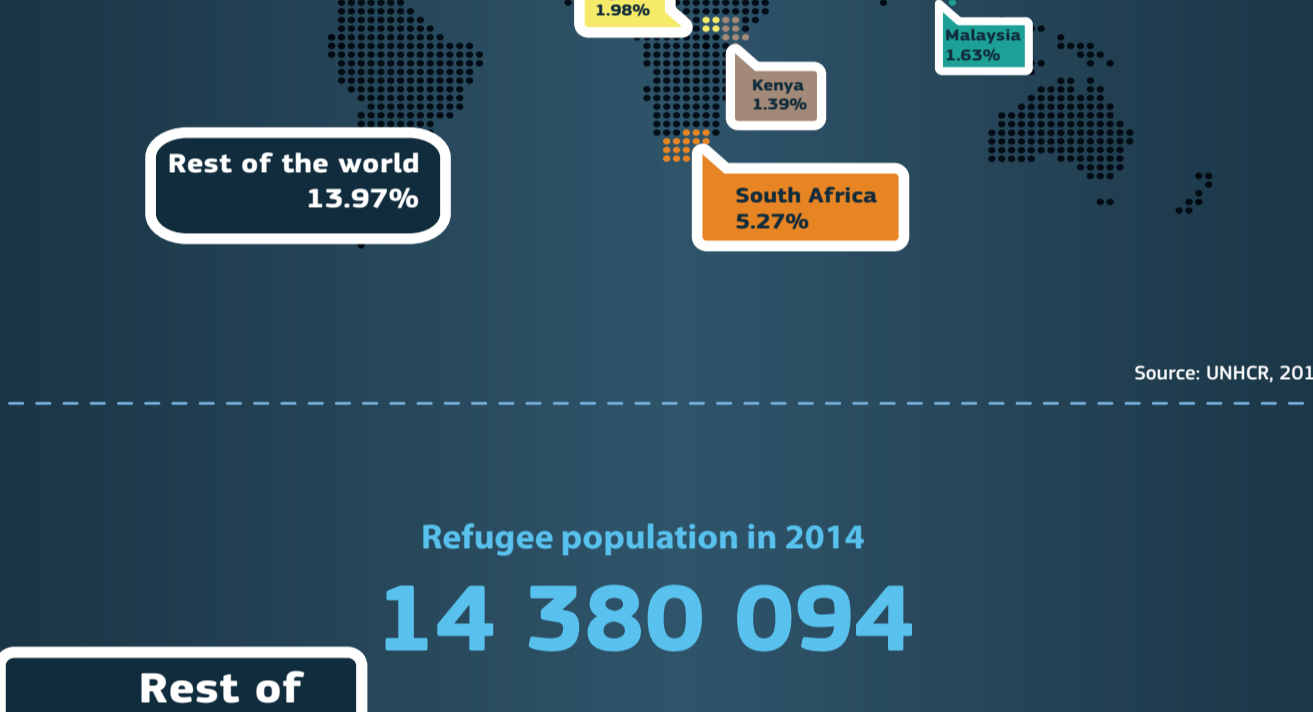
Number of asylum applications per 1 million inhabitants



ASYLUM IN THE WORLD

Total number of asylum applications in 2014

1 635 288



Source: UNHCR, 2015

Refugee population in 2014

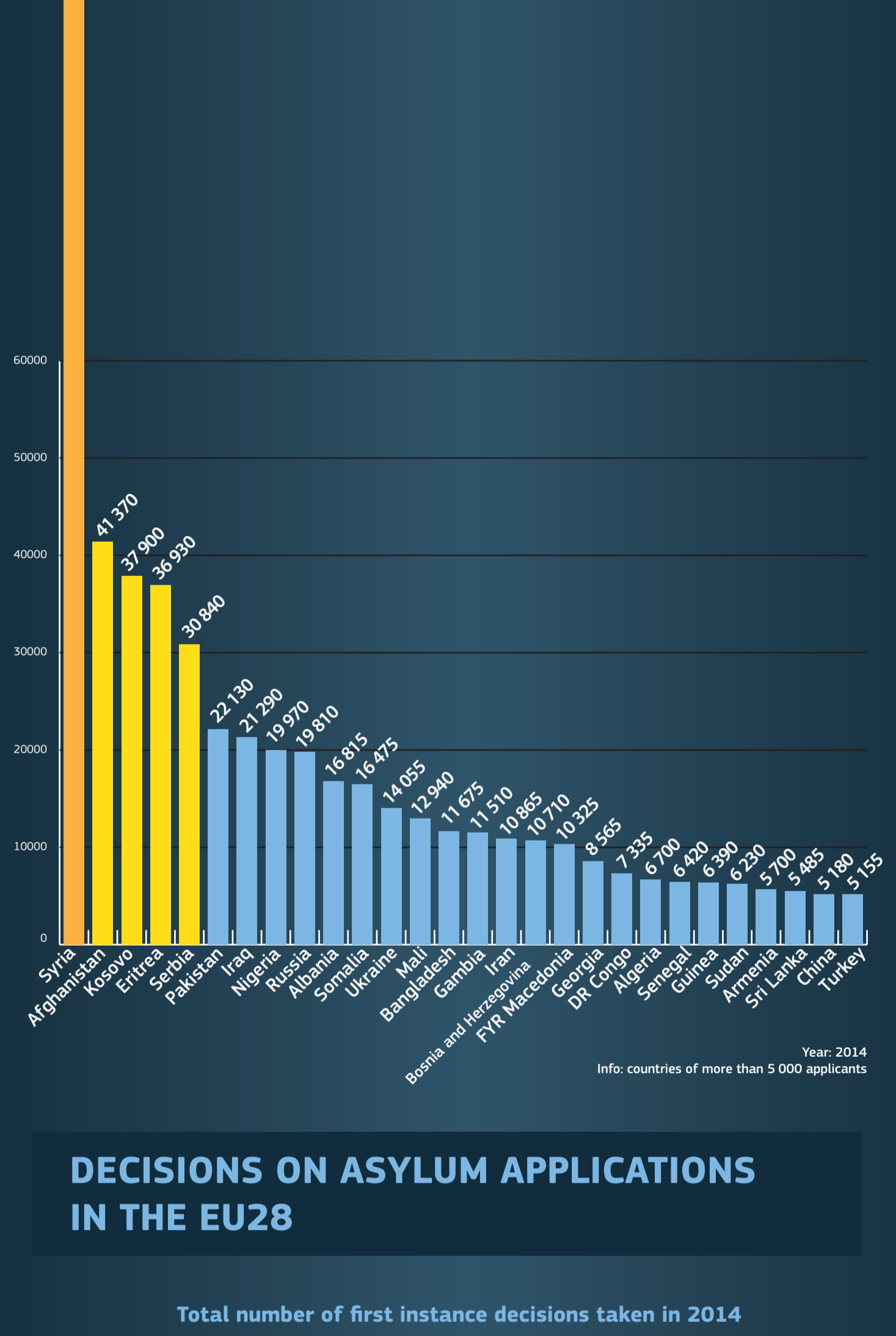
14 380 094



Source: UNHCR, 2015

COUNTRIES OF ORIGIN OF ASYLUM APPLICANTS TO THE EU28

Syria 122 120



Year: 2014

Info: countries of more than 5 000 applicants

DECISIONS ON ASYLUM APPLICATIONS IN THE EU28

Total number of first instance decisions taken in 2014

357 990



54 850 (37.94 %)
Subsidiary protection
(granted to people who are located outside of their home country and who are unable to return there due to fear of suffering serious harm, such as inhumane treatment)

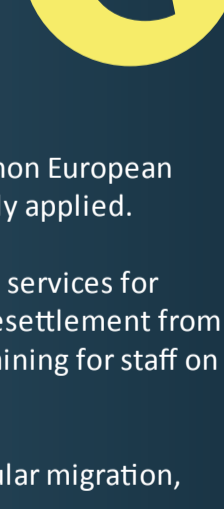
89 725 (62.06 %)
Refugee status
(granted to people who are fleeing their home country due to persecution for reasons of race, religion, nationality, political opinion or membership of a particular social group)

15 505 – 4.33 %
Authorisation to stay for humanitarian reasons
(form of protection EU States may choose to grant for any other reason)

EU ACTION

Asylum, Migration and Integration Fund (2014-20)

The Asylum, Migration and Integration Fund (AMIF) was set up for the period 2014-20, with a total of EUR 3.14 billion. It will promote the efficient management of migration flows and the implementation, strengthening and development of a common Union approach to asylum and immigration.



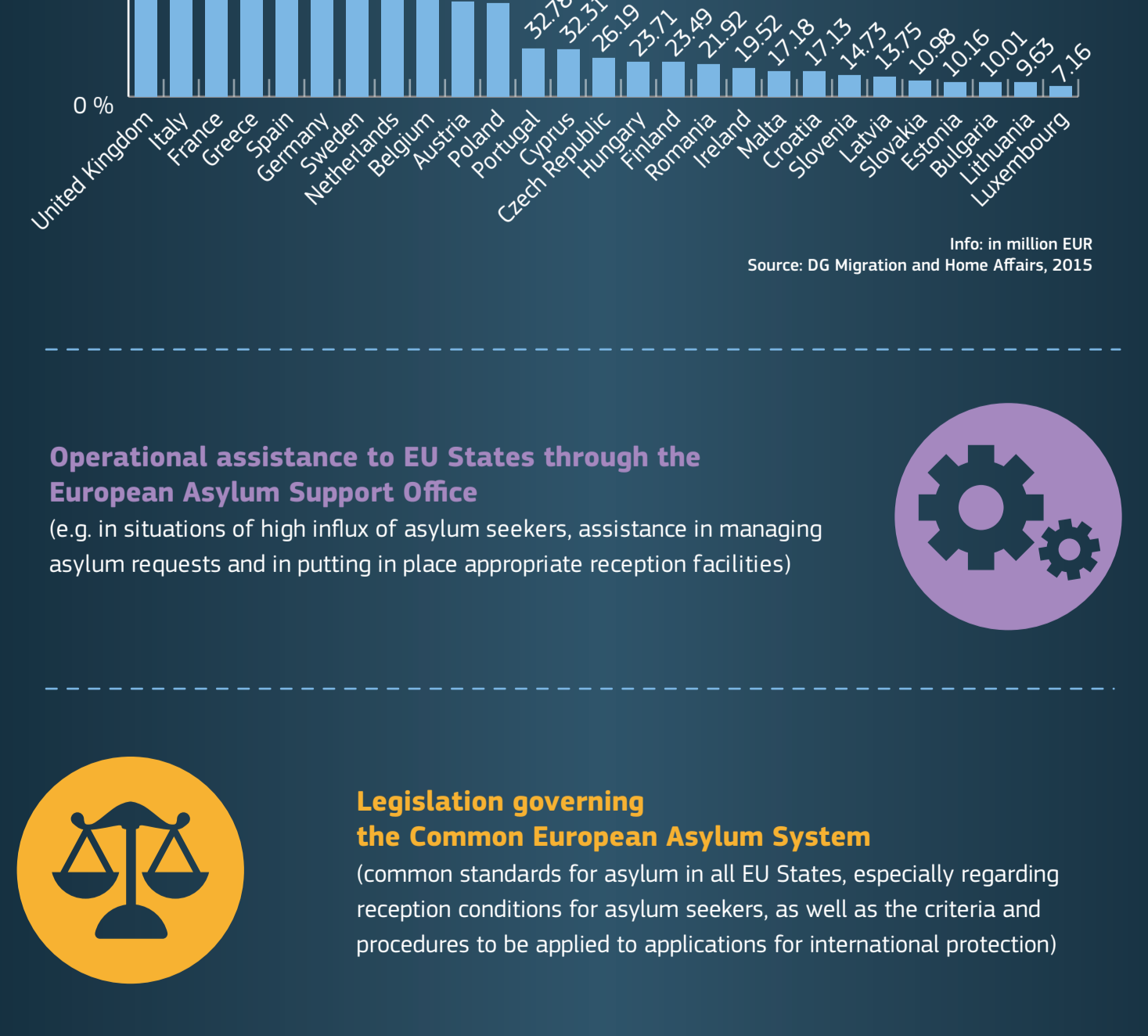
The asylum objective is pursued through the strengthening and developing of the Common European Asylum System and by ensuring that EU legislation in this field is efficiently and uniformly applied.

Concrete actions funded can include the improvement of accommodation and reception services for asylum seekers, improvement of the asylum procedures, relocation within the EU and resettlement from non-EU countries, assistance to vulnerable persons belonging to the target group and training for staff on relevant topics.

The fund also covers: (a) legal migration and integration, (b) return and combating irregular migration, and (c) solidarity for the states which are most affected by migration and asylum flows.

Allocations for national programmes (2014-20)

2 392 million EUR



Info: in million EUR

Source: DG Migration and Home Affairs, 2015

Operational assistance to EU States through the European Asylum Support Office

(e.g. in situations of high influx of asylum seekers, assistance in managing asylum requests and in putting in place appropriate reception facilities)



Legislation governing the Common European Asylum System

(common standards for asylum in all EU States, especially regarding reception conditions for asylum seekers, as well as the criteria and procedures to be applied to applications for international protection)



International solidarity in the form of resettlement

(transferring people in need of international protection from a non-EU country to an EU State where they will be given refugee status)



Regional protection programmes

(financial and technical assistance to non-EU countries of asylum)

Disclaimer: Information in this infographic is for reference purposes only and is not necessarily comprehensive or up to date.

<http://ec.europa.eu/dgs/home-affairs/>